

## STATISTICA 10 MSI SILENT INSTALLER INSTALLATION INSTRUCTIONS

### Products Supported

Single-User and Workstation installs can be deployed silently.

Server installs cannot be deployed silently. These must be installed manually, although the Workstation(s) can be installed silently.

The following *STATISTICA* products can be deployed silently:

- Single-User (32-bit and 64-bit)
  - *Domain Based Registration (DBR) is NOT supported*
- Concurrent Network License Workstation (32-bit and 64-bit)
- Concurrent Network License with Borrowing Workstation (32-bit and 64-bit)
- *STATISTICA* Enterprise Workstation (32-bit and 64-bit)

Note that Workstation installs with Domain Based Registration (DBR) can be deployed silently.

### Operating Systems Supported

- Windows XP
- Windows Vista
- Windows 7
- Windows Server 2003
- Windows Server 2008
- Windows Server 2008 R2

### Prerequisites

Internet Explorer 5.5 or later must be installed prior to using the *STATISTICA* MSI Installer.

### Syntax

Syntax for the *STATISTICA* MSI Installer includes the user interface, install properties, and an optional log file.

### User Interface

You can control the amount of User Interface you see during the install process by using various switches. UI options include:

- |          |  |
|----------|--|
| /qn      | No user interface (completely silent mode). This can also be specified as /quiet           |
| /qr      | Reduced user interface with a modal dialog box displayed for successful registration       |
| /qf      | Full user interface. This is the default if no user interface options are specified        |
| /passive | Passive user interface with a progress bar to indicate that an installation is in progress |

**Note for Vista and newer operating systems:** If installing to Windows Vista, you will see an elevation prompt when the install execute sequence begins. When running the installer in completely silent mode (/qn), you must start the install from an elevated command prompt; otherwise the installer will fail because completely silent installs will not prompt for elevation.

## Install Properties

The following properties can be defined for installs:

Required Installation Codes (Single-User only):

SERIALNUMBER	StatSoft-supplied Serial Number
CDKEY	StatSoft-supplied CD Key
INSTALLCODE	StatSoft-supplied Install Code

Required User Registration information (Single-User only):

REG_FIRSTNAME	User First Name
REG_LASTNAME	User Last Name
REG_COMPANY	Company Name
REG_TITLE	User Title
REG_ADDRESS	Address
REG_CITY	City The standard two-letter abbreviation is required for the United States and Canada (e.g., 'TX' or 'ON', for Texas & Ontario)
REG_COUNTRY	Country This is the ISO three-letter country code and the country name (e.g., 'DEU Germany' or 'USA United States')
REG_ZIP	Zip/Postal Code
REG_PHONE	Phone Number
REG_EMAIL	Email Address (needed for product registration)

Optional installation path (Single-User or Workstation):

INSTALLDIR	Installation directory; if not supplied, defaults to C:\Program Files\StatSoft\STATISTICA 10 Certain installations may want to install to a non-default path, like E:\STATISTICA 10
------------	--

Optional shortcut flag (Single-User or Workstation):

B_DESKTOP_SHORTCUT	When set to 1, a shortcut to <i>STATISTICA</i> is created on the "All Users" desktop When set to 0, no shortcut is created
--------------------	---

Optional multimedia flag (Single-User or Workstation):

INSTALLMULTIMEDIA	When set to 1, multimedia overviews (over 300 MB) are installed When set to 0, overviews are not installed
-------------------	---

Optional license manager shortcut flag (Workstation only):

INSTALLLICENSEMANAGER	When set to 1, Concurrent License Manager shortcut to the Start Menu is enabled When set to 0, shortcut is not enabled
-----------------------	---

Optional server flag (Concurrent Network License with Borrowing Workstation only):

NETWORKINSTALL	When set to 1, files are installed to run from the server When set to 0, files are copied locally
----------------	--

---

U.S. Headquarters: StatSoft, Inc. • 2300 E. 14th St. • Tulsa, OK 74104 • USA • (918) 749-1119 • Fax: (918) 749-2217 • info@statsoft.com • www.statsoft.com

Australia: StatSoft Pacific Pty Ltd.  
Brazil: StatSoft South America  
Bulgaria: StatSoft Bulgaria Ltd.  
Czech Rep.: StatSoft Czech Rep. s.r.o.  
China: StatSoft China

France: StatSoft France  
Germany: StatSoft GmbH  
Hungary: StatSoft Hungary Ltd.  
India: StatSoft India Pvt. Ltd.  
Israel: StatSoft Israel Ltd.

Italy: StatSoft Italia srl  
Japan: StatSoft Japan Inc.  
Korea: StatSoft Korea  
Netherlands: StatSoft Benelux BV  
Norway: StatSoft Norway AS

Poland: StatSoft Polska Sp. z o.o.  
Portugal: StatSoft Ibérica Lda  
Russia: StatSoft Russia  
Spain: StatSoft Ibérica Lda

S. Africa: StatSoft S. Africa (Pty) Ltd.  
Sweden: StatSoft Scandinavia AB  
Taiwan: StatSoft Taiwan  
UK: StatSoft Ltd.

Optional legacy tools flag (Enterprise Local Workstation only)

**INSTALLLEGACYTOOLS**      When set to 1, Legacy Enterprise Tools (Historical Data Edit and Gage Setup) are installed on a local Enterprise workstation  
When set to 0, tools are not installed

## Optional Log File

For detailed debugging, you can enable MSI logging with the `/l* <logfile>` switch:

```
msiexec /i "D:\STATISTICA 10.0.228.7.msi" /qn /l* c:\install.log
```

## Installing via the Command Line

Here are example Single-User and Workstation silent installs.

Please note that strings that include embedded spaces must be enclosed by double-quotes (e.g., "StatSoft, Inc.").

### Single-User

The Single-User silent install utilizes the user registration (REG\_\* properties) and key (CDKEY, INSTALLCODE, and SERIALNUMBER) properties. When performing a Single-User silent install, the installer will attempt to contact the StatSoft registration server to register your software electronically during the install. If automatic registration is not possible, a temporary 14-day license file will be created instead.

This example uses the `/qn` switch (a completely silent install) and specifies a desktop shortcut. Note that address information containing spaces are enclosed by double-quotes.

```
msiexec /i "D:\STATISTICA 10.0.228.7.msi" /qn B_DESKTOP_SHORTCUT=1 CDKEY=XXXXXXXXXX  
INSTALLCODE=XXXXXXXX SERIALNUMBER=XXXXXXXXX REG_FIRSTNAME=John  
REG_LASTNAME=Doe REG_TITLE=Statistician REG_COMPANY="ACME Inc." REG_ADDRESS="2300  
E 14th St" REG_CITY=Tulsa REG_STATE=Oklahoma REG_COUNTRY="United States" REG_ZIP=74104  
REG_PHONE=918-749-1119 REG_EMAIL=user@company.com
```

### Workstation

The Workstation silent installer excludes user registration and key information, which are part of the server install.

You can map a drive to the `\STATISTICA 10\` folder on the server:

```
msiexec /i "D:\Workstation Installer\STATISTICA 10.0.228.7.msi" /qn
```

Alternatively, you can use the UNC path to the `\STATISTICA 10\Workstation Installer\` folder on the server:

```
msiexec /i "\\ServerName\STATISTICA 10\Workstation Installer\STATISTICA 10.0.228.7.msi" /qn
```

Note that you cannot map a drive directly to the Workstation Installer directory.

## Uninstalling via the Command Line

Here is an example Single-User silent uninstall.

Please note that strings that include embedded spaces must be enclosed by double-quotes (e.g., "StatSoft, Inc.").

A previous installation can be uninstalled by using the following command-line:

```
msiexec /uninstall "D:\STATISTICA 10.0.228.7.msi"
```

---

**U.S. Headquarters: StatSoft, Inc. • 2300 E. 14th St. • Tulsa, OK 74104 • USA • (918) 749-1119 • Fax: (918) 749-2217 • info@statsoft.com • www.statsoft.com**

Australia: StatSoft Pacific Pty Ltd.  
Brazil: StatSoft South America  
Bulgaria: StatSoft Bulgaria Ltd.  
Czech Rep.: StatSoft Czech Rep. s.r.o.  
China: StatSoft China

France: StatSoft France  
Germany: StatSoft GmbH  
Hungary: StatSoft Hungary Ltd.  
India: StatSoft India Pvt. Ltd.  
Israel: StatSoft Israel Ltd.

Italy: StatSoft Italia srl  
Japan: StatSoft Japan Inc.  
Korea: StatSoft Korea  
Netherlands: StatSoft Benelux BV  
Norway: StatSoft Norway AS

Poland: StatSoft Polska Sp. z o.o.  
Portugal: StatSoft Ibérica Lda  
Russia: StatSoft Russia  
Spain: StatSoft Ibérica Lda

S. Africa: StatSoft S. Africa (Pty) Ltd.  
Sweden: StatSoft Scandinavia AB  
Taiwan: StatSoft Taiwan  
UK: StatSoft Ltd.

The parameter can either specify the original MSI file or the Product Code, which is a code associated with each release of *STATISTICA*. This code can be read from the registry by finding the *STATISTICA* Add/Remove program file entry from the registry key:

```
HKEY_LOCAL_MACHINE\Software\Microsoft\Windows\CurrentVersion\Uninstall
```

For 64-bit *STATISTICA*, here is a registry location of the Add/Remove program entry:

```
KEY_LOCAL_MACHINE\Software\Microsoft\Windows\CurrentVersion\Uninstall\ {5DC6F9CF-9DC9-8048-2C04-46CDE11D10BB}, where {5DC6F9CF-9DC9-8048-2C04-46CDE11D10BB} is the Product Code.
```

The syntax to uninstall 64-bit *STATISTICA* using the Produce Code would be:

```
msiexec /uninstall {5DC6F9CF-9DC9-8048-2C04-46CDE11D10BB}
```

For 32-bit *STATISTICA*, here is a registry location of the Add/Remove program entry:

```
KEY_LOCAL_MACHINE\Software\Microsoft\Windows\CurrentVersion\Uninstall\ {B25788D1-15D3-FF3F-8B07-A7368C1B0B37}, where {B25788D1-15D3-FF3F-8B07-A7368C1B0B37} is the Product Code.
```

The syntax to uninstall 32-bit *STATISTICA* using the Produce Code would be:

```
msiexec /uninstall {B25788D1-15D3-FF3F-8B07-A7368C1B0B37}
```

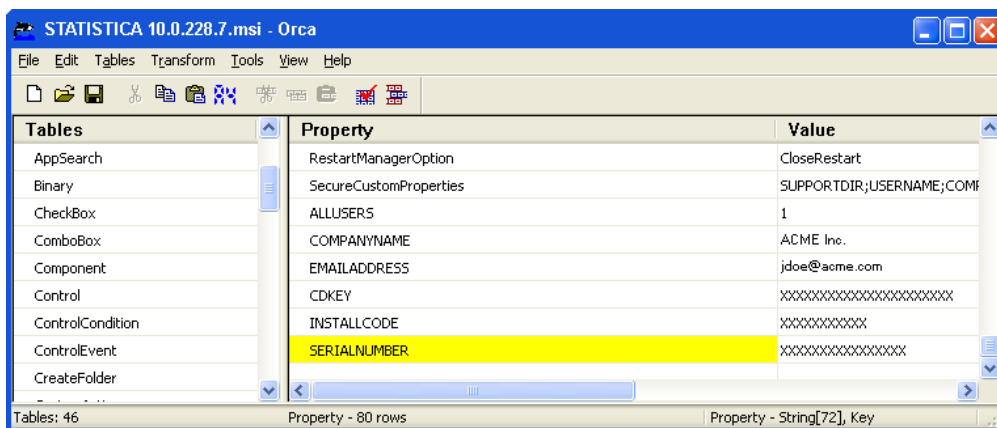
## Installing and Uninstalling via the ORCA Platform

The ORCA Platform is an alternative to the Command Line. Quotes should NOT be used around strings.

The MSI can be assigned or published by a system administrator using Group Policy. You need to use a tool such as Orca to edit the MSI database so that required properties such as CDKEY are defined when the MSI is executed.

An example of installing the software in this manner might include:

1. Make sure the network location you have placed the MSI file grants “Authenticated Users” read/execute rights for both the Share and NTFS permissions.
2. Edit the MSI database using a tool such as Orca. Add all of the required MSI properties and values to the MSI database in the Property table (CDKEY, INSTALLCODE, SERIALNUMBER, USERNAME, COMPANYNAME, and EMAILADDRESS). If you omit USERNAME, it will be read from the workstation registry.



U.S. Headquarters: StatSoft, Inc. • 2300 E. 14th St. • Tulsa, OK 74104 • USA • (918) 749-1119 • Fax: (918) 749-2217 • info@statsoft.com • www.statsoft.com

Australia: StatSoft Pacific Pty Ltd.  
 Brazil: StatSoft South America  
 Bulgaria: StatSoft Bulgaria Ltd.  
 Czech Rep.: StatSoft Czech Rep. s.r.o.  
 China: StatSoft China

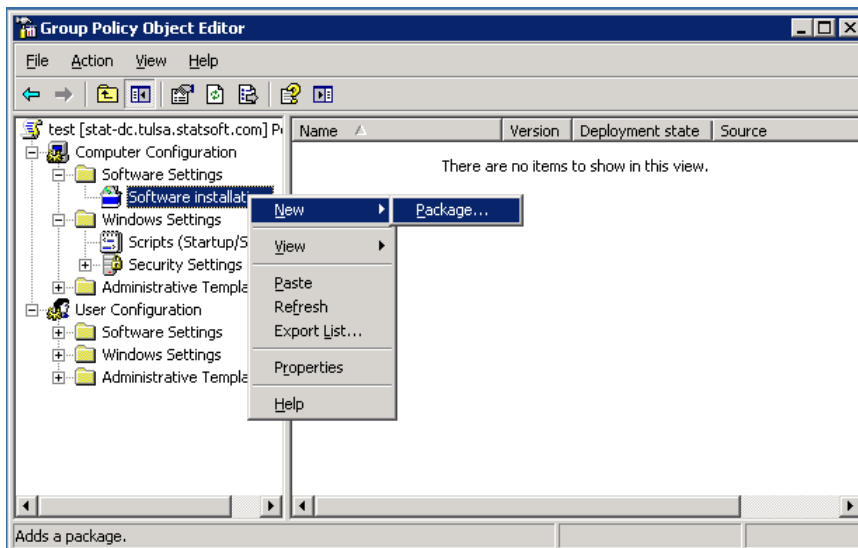
France: StatSoft France  
 Germany: StatSoft GmbH  
 Hungary: StatSoft Hungary Ltd.  
 India: StatSoft India Pvt. Ltd.  
 Israel: StatSoft Israel Ltd.

Italy: StatSoft Italia srl  
 Japan: StatSoft Japan Inc.  
 Korea: StatSoft Korea  
 Netherlands: StatSoft Benelux BV  
 Norway: StatSoft Norway AS

Poland: StatSoft Polska Sp. z o.o.  
 Portugal: StatSoft Ibérica Lda  
 Russia: StatSoft Russia  
 Spain: StatSoft Ibérica Lda

S. Africa: StatSoft S. Africa (Pty) Ltd.  
 Sweden: StatSoft Scandinavia AB  
 Taiwan: StatSoft Taiwan  
 UK: StatSoft Ltd.

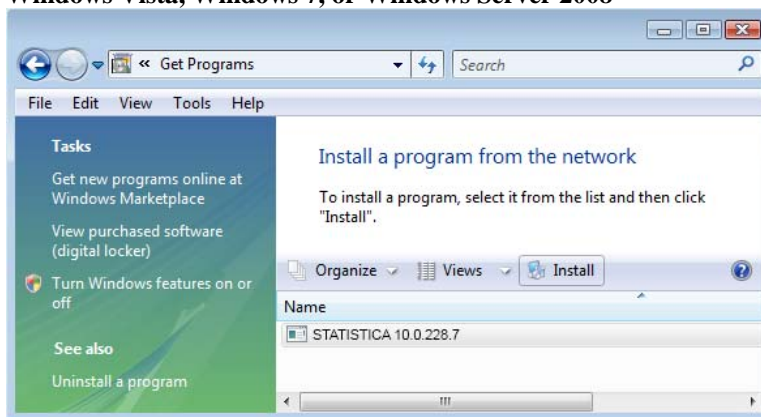
3. Edit a Group Policy Object to which you want to assign the software package. You can assign it to either a Computer Configuration or User Configuration.



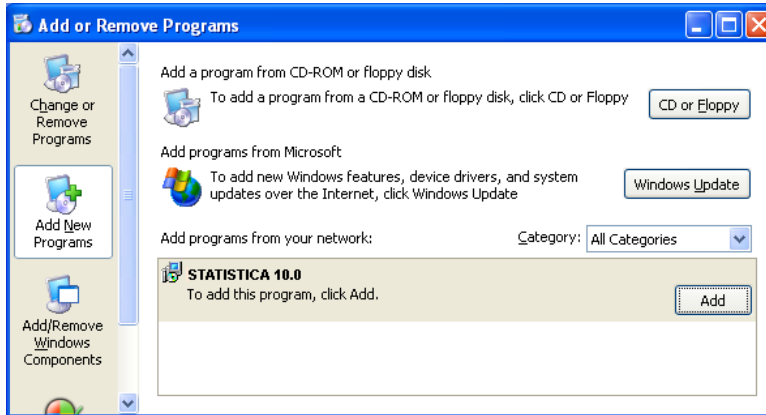
4. Browse to the MSI file. This should be available at a network location accessible by any computer for which you may want to deploy *STATISTICA*. You will be prompted for the choice of either Assigned or Published. Assigned is the only option available if you are using Computer Configuration instead of User Configuration.
5. You can optionally run GPOUpdate from a command line on the workstation to update their Group Policy settings immediately. If you assigned the software to the Computer Configuration, you will need to reboot the workstation for the installation to execute.

If you published the software to a specific User Configuration, the users will be able to install the software from Add/Remove Programs. Below are examples of how this appears in different Windows operating systems:

#### Windows Vista, Windows 7, or Windows Server 2008



## Windows XP or Windows Server 2003



Part Number 1110-SILENT-INSTALL

**U.S. Headquarters: StatSoft, Inc. • 2300 E. 14th St. • Tulsa, OK 74104 • USA • (918) 749-1119 • Fax: (918) 749-2217 • info@statsoft.com • www.statsoft.com**

Australia: StatSoft Pacific Pty Ltd.  
Brazil: StatSoft South America  
Bulgaria: StatSoft Bulgaria Ltd.  
Czech Rep.: StatSoft Czech Rep. s.r.o.  
China: StatSoft China

France: StatSoft France  
Germany: StatSoft GmbH  
Hungary: StatSoft Hungary Ltd.  
India: StatSoft India Pvt. Ltd.  
Israel: StatSoft Israel Ltd.

Italy: StatSoft Italia srl  
Japan: StatSoft Japan Inc.  
Korea: StatSoft Korea  
Netherlands: StatSoft Benelux BV  
Norway: StatSoft Norway AS

Poland: StatSoft Polska Sp. z o.o.  
Portugal: StatSoft Ibérica Lda  
Russia: StatSoft Russia  
Spain: StatSoft Ibérica Lda

S. Africa: StatSoft S. Africa (Pty) Ltd.  
Sweden: StatSoft Scandinavia AB  
Taiwan: StatSoft Taiwan  
UK: StatSoft Ltd.