

STATISTICA

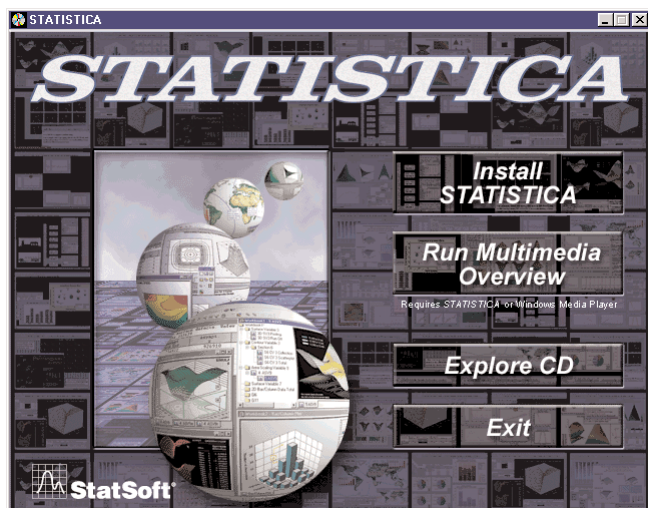
STATISTICA 6 CONCURRENT NETWORK LICENSE INSTALLATION INSTRUCTIONS

Notes:

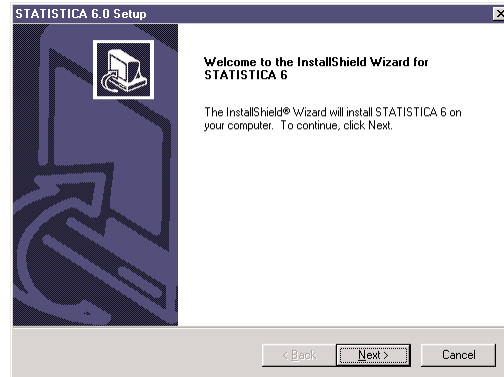
1. The installation of the Concurrent network version entails two parts: a) A server installation, and b) Workstation installations on each of the client machines. The program will not function if the client installations are not completed.
2. Users running Windows NT, 2000, or XP on their client machines must login with Administrator permissions to complete the client installation. The installation makes necessary changes to the system. If the user is prompted to reboot during the installation, he/she must login with Administrator permissions after rebooting to successfully complete the installation.
3. If you have a previous version of *STATISTICA* already on your computer, please use Control Panel - Add/Remove Programs to uninstall the old program so that data files created with earlier versions of *STATISTICA* will remain intact. Once this is complete, please proceed with the following instructions for installation.

Server Installation

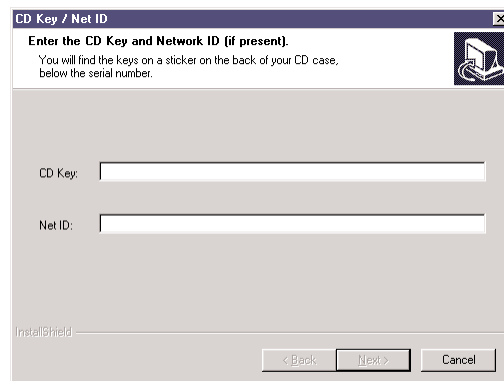
1. Ensure that no other applications are running.
2. Insert the *STATISTICA* CD into the CD-ROM drive. The installation process should begin automatically. If the CD does not auto-start, browse the CD and double-click on *Setup.exe*.
3. The *STATISTICA* installation screen will appear. Click on *Install STATISTICA*.



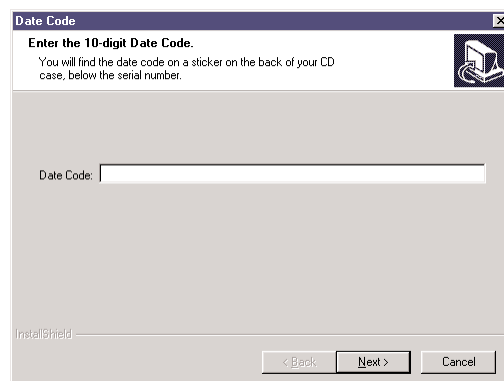
4. The Welcome screen will appear. Click the *Next* button.



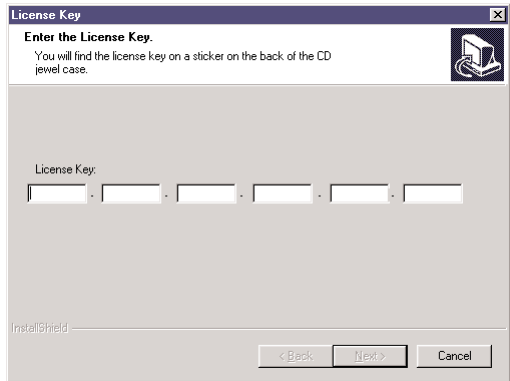
5. In the CD Key / Net ID dialog, enter the CD key and Net ID in the appropriate boxes. You will find the keys on a sticker on the back of the CD case, below the serial number. Click *Next* to continue.



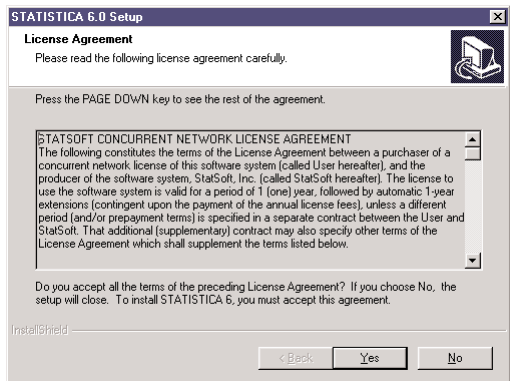
6. In the Date Code dialog, enter the Date Code. You will find the code on a sticker on the back of the CD case. Click *Next* to continue.



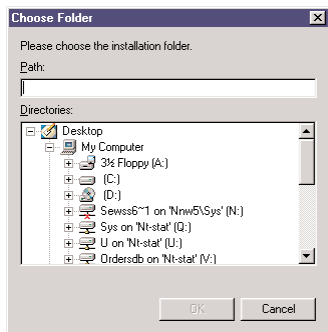
- In the License Key dialog, enter the License Key in the appropriate boxes. You will find the key on a sticker on the back of the CD case. Click *Next* to continue.



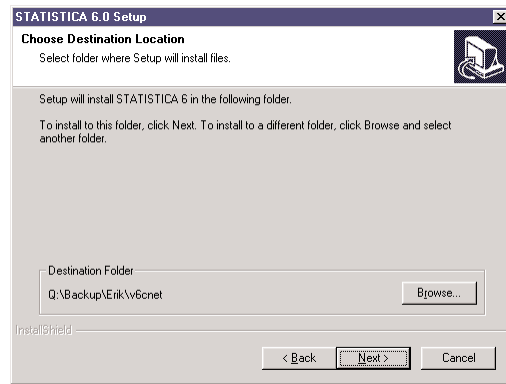
- Read the software license agreement, and then click *Yes* if you agree with the terms and wish to continue the installation process.



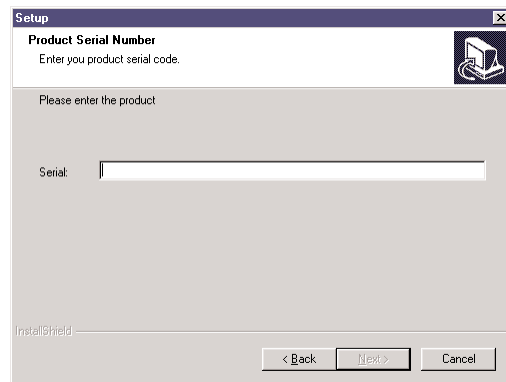
- In the Choose Folder dialog, choose where you want to install the *STATISTICA* Concurrent Network server software by either typing in the path, or browsing through the directories. When you have chosen your installation path, click *OK*. If the specified destination folder does not exist, Setup will create it for you.



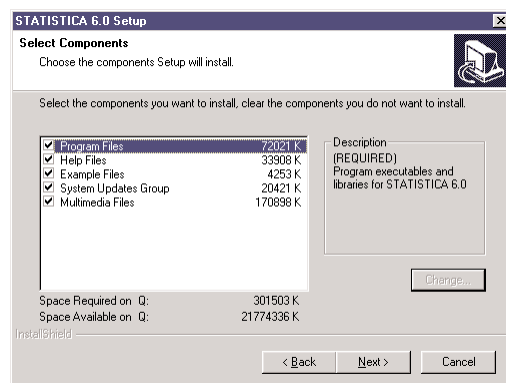
- To install to the selected destination, click *Next* on the Choose Destination Location dialog.



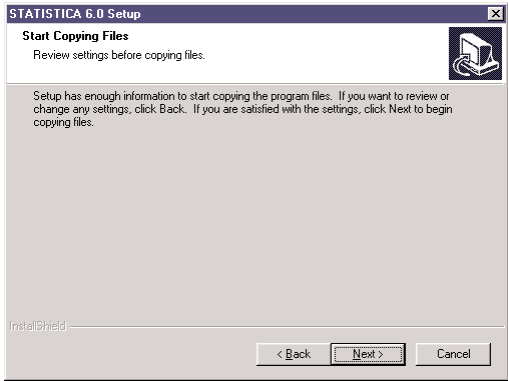
- In the Product Serial Number dialog, enter your Serial Number in the box. You will find the Serial Number on a sticker on the back of the CD case. Click *Next* to continue.



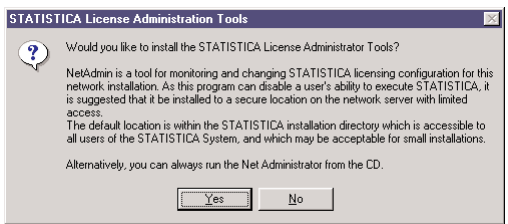
- In the Select Components screen, you will be shown the components that you will be installing to the server. Note that the Multimedia files are movies and demonstrations of *STATISTICA*, which will be installed to the server, and can then be viewed from the any workstation. Click *Next* to continue.



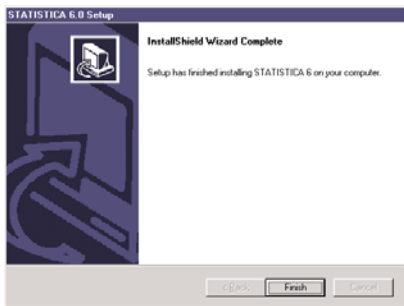
- In the Network Path - License File dialog, you will be prompted for the location to place the *STATISTICA* licensing configuration file. This is the licensing file that will keep track of how many workstations are in use. It must be shared, and all workstations must have full control (read/write/execute permissions) to this file. The relative path information must also be correct for all workstations
- To begin copying files to your machine, click *Next*.



- After the files have been copied to your machine, you will be given the opportunity to install the *STATISTICA* License Administrator Tools. NetAdmin is a tool for monitoring and changing *STATISTICA* licensing configuration for the network installation. As this program can disable a user's ability to execute *STATISTICA*, it is suggested that it be installed to a secure location on the network server with limited access. The default location is within the *STATISTICA* installation directory which is accessible to all users of the *STATISTICA* System, and which may be acceptable for small installations.



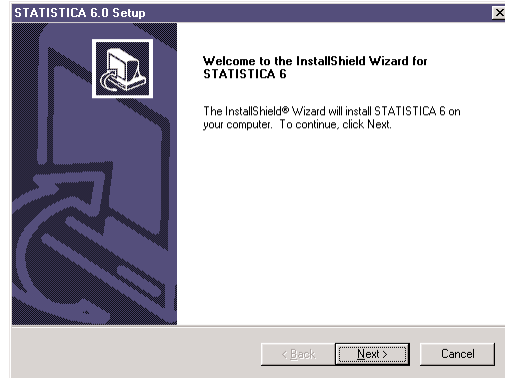
- You should then receive a message stating that the installation is complete. Click *Finish* to complete the installation process.



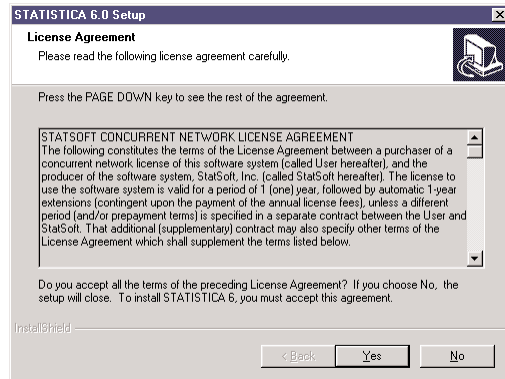
- Version 6 example datasets are located within the installation directory, in Examples\Datasets.

Workstation Installation

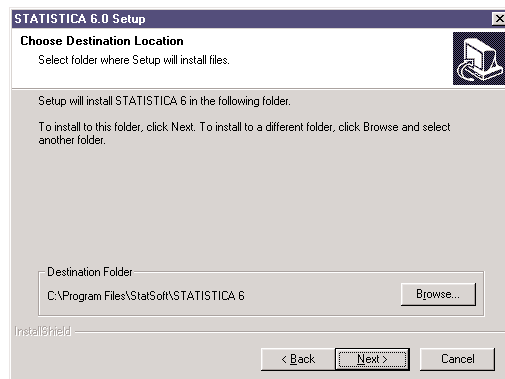
- Ensure that no other applications are running.
- Locate the Setup subfolder of the folder in which the *STATISTICA* program files were installed on the server. Double-click the *Setup.exe* file located in the Setup subfolder.
- The Welcome screen will appear. Click *Next*.



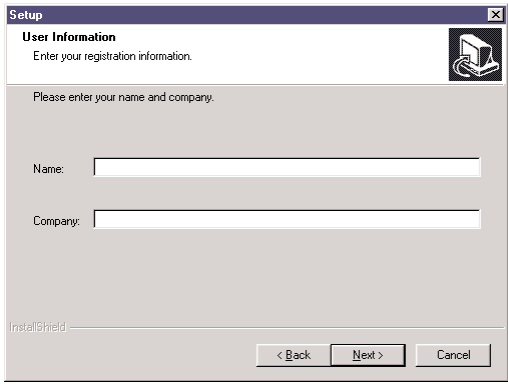
- Read the software license agreement, and then click *Yes* if you agree with the terms and wish to continue the installation process.



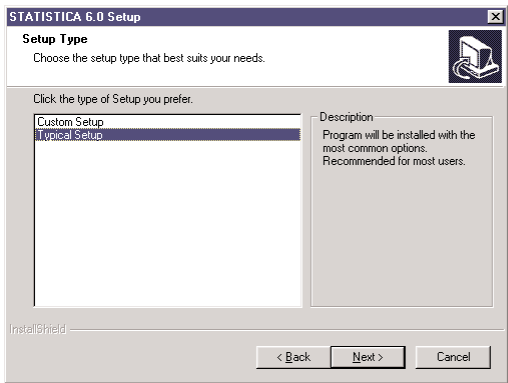
- To install to the default destination, click *Next* on the Choose Destination Location dialog. To install to a different destination, click *Browse*, select another destination, and click *Next*.



- In the User Information dialog, enter the user name and the company name in the appropriate boxes.

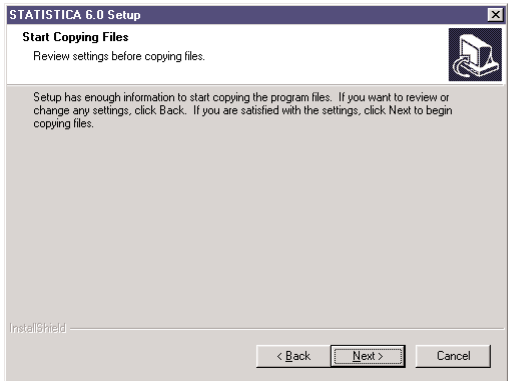


- Select either Typical Setup or Custom Setup, then click *Next*.

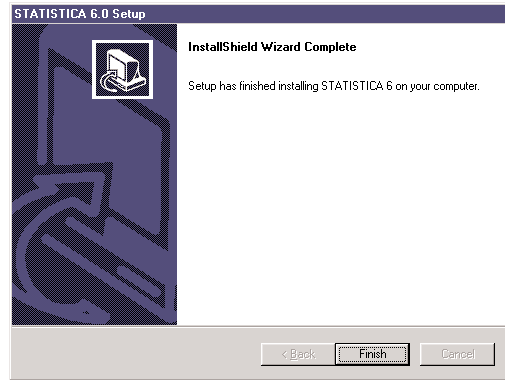


Typical Setup will install *STATISTICA* with the most common options; this is recommended for most users. If you choose Typical Setup, you will be given the option to either install the Multimedia Overviews files to your hard drive, or simply view them from the installation directory. Custom Setup will allow you to choose the options that you want to install, and will allow you to redefine where to access the *STATISTICA* licensing configuration file.

- If you are satisfied with all of your choices, click *Next* on the Start Copying Files dialog.



- Your system will be updated and program files will be installed. If you receive any Version Conflict messages, it is recommended that you keep your existing file (click *Yes*).
- If the workstation's system files need to be updated, you must restart your computer to finish the installation process. Click *Finish* on the Setup Complete dialog.



- STATISTICA* requires Microsoft Data Access Components (MDAC) version 2.1. If the workstation did not have MDAC 2.1 (or higher) installed, its setup process will be started when the computer restarts. To complete this setup process, you must restart your computer once more.
- After the installation process has been completed, you will see the *STATISTICA* program group window, which will contain the appropriate *STATISTICA* application shortcuts.

Un-installing

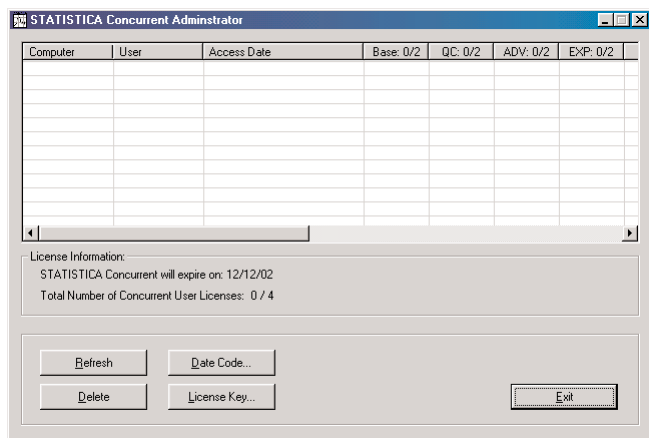
To completely remove *STATISTICA* from each workstation, run the Add/Remove Program option found in the Windows Control Panel. To completely remove *STATISTICA* from the server, delete the folder containing the program files and all of its subfolders.

Repairing

To repair your existing installation of *STATISTICA*, run the Add/Remove Program option found in the Windows Control Panel. Then, choose *Repair*, and click *Next*. This will reinitialize all of your user information and Date Code information, and reinstall the files.



Network Administrator Functions



Refresh: Because the workstation window may change as users install or uninstall you should periodically press the Refresh button to update the window to reflect the current status of the workstations.

Delete: As users log on to *STATISTICA*, the workstation is appropriately added or removed from the workstation window. If a workstation loses its network connection unexpectedly, the Network Administrator may continue to show it as an active session. In order to free the license, you may highlight the affected workstation and press the delete key.

Date Code: If you receive a new Date Code from StatSoft, you may administer the new date code by pressing the Date Code button. This allows you to easily update the Date Code without the need to update each workstation installation, or reinstall the server. After entering the new Date Code, the new expiration date will be displayed in the license information section.

License Key: If you purchase additional workstation licenses, you will receive a new License Key from StatSoft. You may administer the new License Key by pressing the License Key button. Again, this allows you to easily update your installation without the need to update each workstation, or reinstall the server. After entering the new License Key, the license information section will be updated.

Frequently Asked Questions

Server Installation

Q. When installing the server, I receive a message stating it was unable to create the licensing file. What does this indicate?

A. This indicates that you may not have write permissions for the selected folder for the server installation. Review the permissions and correct them as necessary.

Q. When installing the server, I receive a message stating that the option file StatOpts.xml could not be created. How is this resolved?

A. Once the installation fails, verify that you have proper permissions to the selected folder for the server installation. If full permissions are set for the folder and you still receive this error during your initial installation, you should manually delete the contents of the server installation directory. Now, restart the server installation process.

Q. When installing the server, I receive a message stating there was an error initializing the installer. The message states that this may be caused by having both network and workstation installs on the same computer. What do I do to advance in the installation?

A. You will need to remove the workstation installation before performing the server installation again. If you press the OK button on this dialog, the workstation installation will be removed. You will then be able to begin the server installation. If you press the Cancel button, the workstation installation will remain on the system, allowing you to perform the server installation from another workstation.

Running from the Server

Q. When I attempt to launch *STATISTICA* from the server, I receive a prompt for a date code. How do I resolve this?

A. It is not possible to run *STATISTICA* directly from the server installation. It is necessary to do a workstation installation, and to run *STATISTICA* from the workstation installation.

Workstation Installation

Q. When installing a workstation, I receive an error message stating that the installation program was unable to configure the workstation. What causes this?

A. This can be caused by a permission issue on the workstation. The workstation user must have full access to the application directory created on the workstation for installation of the workstation files. These permissions are needed in addition to the permissions required for the server file directories. After you confirm local permissions, you should be able to install *STATISTICA* on the workstation. If you are still unable to install, there may be corruption on the workstation hard drive preventing installation. You may also attempt to install *STATISTICA* to another directory on the workstation.

Q. Upon launching the workstation setup.exe and clicking "Next >" the following error message is raised: Unable to find the configuration file. How is this resolved?

A. **Problem 1:** For some reason or other, the Windows Security Permissions to the ...Sdata folder on the Server (*STATISTICA* File Server) are restricted to the user who currently logged on to Windows (Windows logon used to perform the workstation install).

Fix: Grant explicit Windows Security Permissions (Read/Write or else Full Control) to the ...Sdata folder on the Server for any and all Windows logons that are to be used for workstation installations. In practice it is often easier to simply select another Windows Logon



(System Administrator) that already has explicit Security Permissions to the folder to perform the workstation installation/s.

Problem 2: A disparity exists between the path as expressed within the "xxnet" file on the File Server and the availability of said path on the workstation. The path may either be expressed as a UNC (ex. \\<Computer Name>\Shared resource name\...) or as a drive letter. If the drive and/or path as expressed in the "xxnet" file is not available (accessible) on the workstation, or for the user's Windows logon, the preceding error message will be apparent.

Note: The path as apparent in the "xxnet" file is created directly from the path as it exists on the File Server at the time of the *STATISTICA* File Server installation. If a common drive letter mapping to the *STATISTICA* File Server is to be used on all workstations, it is recommended that the same mapping be made on the machine that is to become the File Server, BEFORE performing the *STATISTICA* File Server installation. In this way, the "xxnet" file will be automatically populated with the path expressed with the common drive letter and resource path.

Fix: Using Notepad (Start | Run -> Notepad), manually edit the path in the "xxnet" file to reflect a network resource location that is common to all users of *STATISTICA*.

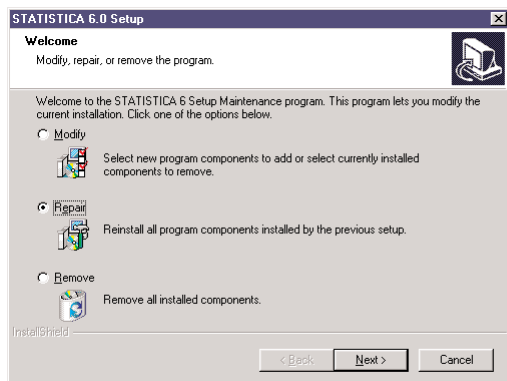
Running on a Workstation

Q. When I attempt to launch *STATISTICA* from a workstation, I receive an error message stating that the program cannot find the configuration file. What causes this?

A. This can be caused by either a lack of permissions for the server directory. Specifically, the workstation needs read and write access to the Statnet.lic file in the SDATA folder of the server installation.

Q. When I attempt to launch *STATISTICA* from a workstation, I receive an error message stating that the network client was not properly installed. What should I do to resolve this?

A. Open the Windows control panel and double-click the Add/Remove Programs icon. Select *STATISTICA* to launch the *STATISTICA* Setup program. Selecting the Repair option will reinstall the program and should resolve this problem. If you still receive the message after performing the repair, you will need to Remove the program and then reinstall the program from the server setup directory.



Q. When I attempt to launch *STATISTICA* from a workstation, I receive a prompt for a date code. How do I resolve this?

A. Open the Windows control panel and double-click the Add/Remove Programs icon. Select *STATISTICA* to launch the *STATISTICA* Setup program. Selecting the Repair option will reinstall the program and should resolve this problem. If you still receive the message after performing the repair, you will need to Remove the program and then reinstall the program from the server setup directory.

Q. Upon launching *STATISTICA* the user is immediately confronted with the following error message: Unexpected error accessing concurrent licensing file. How is this resolved?

A. **Problem 1:** This error occurs when the "..\Sdata\StatNet.lic" file is set with the "read-only" attribute. This is sometimes the case when this file or else the entire *STATISTICA* File Server has been restored from backup. The User may be unaware that a restore had taken place and only note that "it was working fine yesterday" but they now encounter this error.

Fix: Verify the file's properties by navigating (Windows Explorer) to the "..\Sdata" folder and right-clicking on the file. Remove the "read-only" attribute by clicking the appropriate check box.

Problem 2: This error also occurs when the user's Windows Logon does not explicitly allow them Security Permission to the file ("..\Sdata\StatNet.lic"). It is likely that the Windows Logon currently being used does not have the same Security Permissions as that of the Logon used to install the workstation. It may be that the user is simply logged on to Windows with a different user than they assume. This is likely the case if they claim they could log on to *STATISTICA* before but cannot now.

Fix: Ask the user to verify their logon (log out and log back into Windows again) and attempt once again to launch *STATISTICA*.

Fix Continued: It is possible that the Windows Logon does not have sufficient Security Permissions for the file. This may even be due to Security Permissions at either the network drive, Windows share or System folder levels. Verify the Windows Logon Security Permission by navigating (Windows Explorer) to the "..\Sdata" folder and right-clicking on the file, click the "Security" tab and note the User's identity or Domain group permissions. Identify the level at which the Logon is prevented from access and correct permissions by having a Windows Domain Administrator add the necessary permissions, Special Access (RW) "Read/Write" or Full Control (All).



2300 E. 14th St. • Tulsa, OK 74104 • USA • (918) 749-1119 • Fax: (918) 749-2217 • info@statsoft.com • www.statsoft.com

Australia: StatSoft Pacific Pty Ltd.
Brazil: StatSoft South America
Czech Republic: StatSoft Czech Rep. s.r.o.
France: StatSoft France

Germany: StatSoft GmbH
Hungary: StatSoft Hungary Ltd.
Israel: StatSoft Israel Ltd.
Italy: StatSoft Italia srl

Japan: StatSoft Japan Inc.
Korea: StatSoft Korea
Netherlands: StatSoft Benelux BV
Poland: StatSoft Polska Sp. z o. o.

Portugal: StatSoft Iberica Ltda.
Russia: StatSoft Russia
Singapore: StatSoft Singapore
S. Africa: StatSoft S. Africa (Pty) Ltd.

Spain: StatSoft Espana
Sweden: StatSoft Scandinavia AB
Taiwan: StatSoft Taiwan
UK: StatSoft Ltd.